



# MANA ENTERPRISE

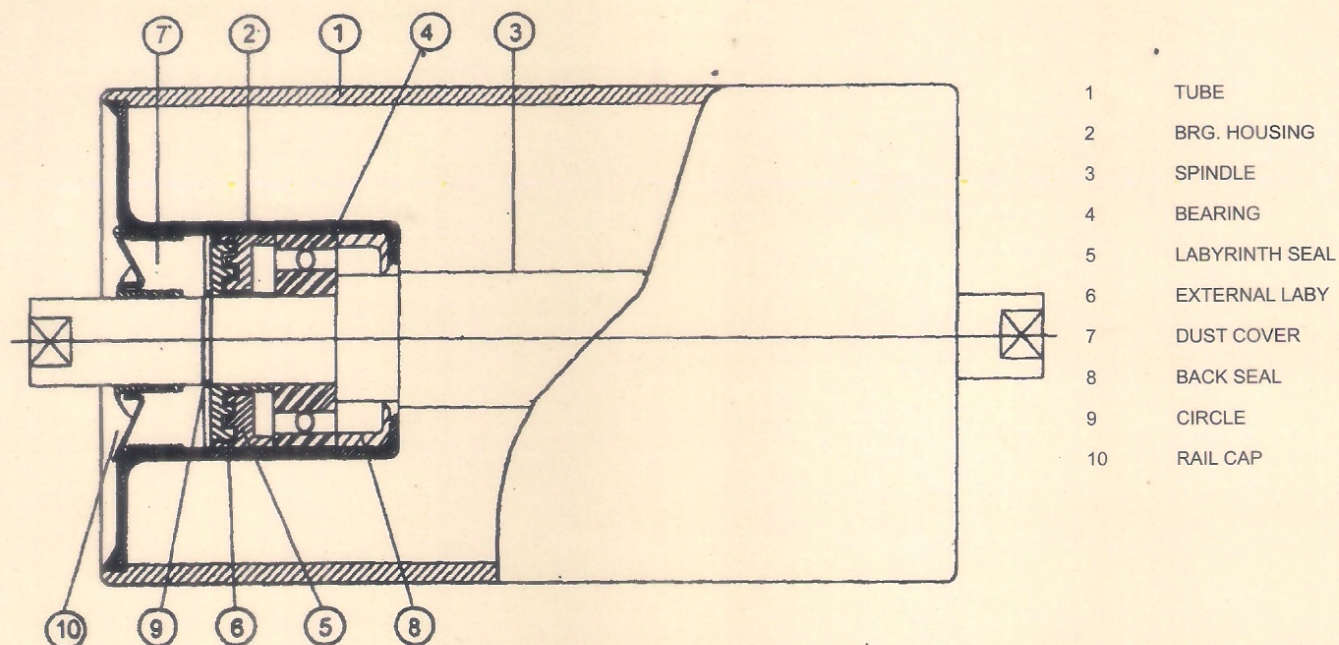
Tel. No. : 033-6555-2056 ● Mob. No. : +91 9831532055

Tel. Fax : (033) 2653-2463

E-mail : [manaenterprise@yahoo.com](mailto:manaenterprise@yahoo.com) / [enterprise\\_mana@yahoo.com](mailto:enterprise_mana@yahoo.com)

Website : [www.conveyormana.com](http://www.conveyormana.com)





## ABOUT OURSELVES

**ME** is one of the leading designers and manufacturer of various types of bulk and package handling conveyors and systems and their components like Idlers, Drums Pulleys etc.

**ME** has designed and manufactured Idlers in different Troughing Angles and for various usages for a wide range of belt conveyors. The range include fixed carrying type, fixed Return type and garland type and for different belt width.

**ME** Idlers, Drive Drums ensure quality and tail end pulleys ensure quality and performance manufactured as per Latest I. S. spicitation.

Latest Design and Robust Construction idlers Drums & pulleys produced by '**ME**' ensure efficient material handling for various industries. The Idlers and drum available in different ranges having employed modern 'State-of-the art' Technology to fulfil the expectation of esteemed clients. They bear the testimony of strength, quality & class through proven trial.

More so, the latest design of '**ME**' Idlers/Rollers/ Drum pulleys ensures smooth, friction less movement of the conveyors to withstand trying conditions and they minimize under maintenance cost and time.

One source of product

One source for service

One source to assume entire responsibility of your installations  
THAT IS

**ME**

## MAIN FEATURES OF IDLERS / ROLLERS

**Shell :** The shells are made from special ERWV SEAMLESS tube with close tolerance ensuring smooth, Shock-free and eccentricity free running with minimum diametral runout. Smallest rotating weight of rollers requires low horse power, thereby conserving power and energy due to lowest possible dynamic friction. **Bearing Housing :** The bearing housing are made of. deep drawing quality sheets pressed to a very high degree of accuracy, keeping tolerance at bearing seating region as specified by the bearing manufacturers. The housing are welded into the tubes to form Monoblock simultaneously from both sides on rotating centres to ensure absolute concentricity.

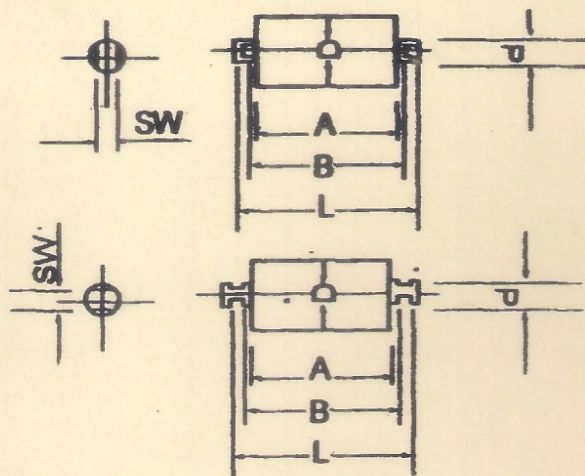
**Bearing :** **ME** rollers are fitted with precision Ball/Taper roller bearing with C3 clearance as per International standard.

**Shaft :** Made from carbon steel EN-8/C-40 round bar. The round bars are cut, turned with perfect tolerance and ground bearing seatings to ensure perfect fit between bearings and shafts. **Labyrinth seals :** Time tested and universally accepted Multistage sealing arrangements made of Nylon 6/6 are provided on both sides of the bearing with Dust Covers and waterproof rain cap. All the components are assembled together with high quality grease packing ensuring effective sealing of bearings from inagress of dust arid moisture, giving trouble free long life. **Lubrication :** All bearings, Labyrinth and grease chambers are permanently lubricated. **Testing :** All the rollers are thoroughly tested for free rotation, measurement of Friction factors, dust and water proof sealing before dispatch.





# BELT CONVEYOR



SERISE - ME 204

STANDARD - IS : 8596 / 4776

TUBE DIA & THICKNESS AS PER IS : 9295

		L.	M.	H.	E. H.
1)	88.9 dia	- 3.25	4.05	4.85	-
2)	114.3 dia	- 3.65	4.5	5.4	6.3
3)	139.7 dia	- 4.5	4.85	5.4	6.3
4)	165.1 dia	- 4.5	4.85	5.4	6.3
	d	=	20 mm		
	SW	=	14 mm		

All Diamention are in mm.

SERIES : ME : 6204/420204

Belt Width	Roller Dia.	Flat Top / Return Idler					2 Roll Top Idler					3 Roll Top Idler				
		Dimension in mm.			Wt. in kg.		Dimension in mm.			Wt. in kg.		Dimension in mm.			Wt. in kg.	
		A	B	L	Rotating Parts	Total	A	B	L	Rotating Parts	Total	A	B	L	Rotating Parts	Total
400	88.9	500	508	536	5.6	7.1	250	258	276	3.5	4.2	160	168	186	2.6	3.2
	114.3				7.6	9.0				4.5	5.3				3.5	3.9
450	88.9	550	558	586	6.0	7.7	290	298	316	3.8	4.7	180	188	206	2.9	3.4
	114.3				8.1	9.8				5.0	5.9				3.7	4.2
500	88.9	600	608	636	6.4	8.3	315	323	341	4.0	5.0	200	208	226	3.0	3.6
	114.3				8.8	10.6				5.3	6.3				3.9	4.5
600	88.9	700	708	736	7.3	9.4	350	358	376	4.3	5.3	235	243	261	3.3	4.0
	114.3				10.0	12.0				5.7	6.8				4.3	5.0
650	88.9	750	758	786	7.7	10.0	380	388	406	4.8	5.7	250	258	276	3.4	4.2
	114.3				10.6	12.9				6.1	7.3				4.5	5.3
750	114.3	850	858	886	11.8	14.3	415	423	441	6.5	7.8	290	298	316	5.0	5.9
	139.7				14.4	17.0				8.5	9.7				6.4	7.5
800	114.3	950	958	998	13.0	16.6	465	473	491	7.1	8.9	315	323	341	5.3	6.5
	139.7				15.9	19.5				9.3	11.0				6.8	8.0
	165.1				20.3	23.9				11.0	12.7				8.0	9.2
900	114.3	1050	1058	1098	14.2	18.2	530	538	556	7.9	9.9	350	358	376	5.7	7.0
	139.7				17.4	21.4				10.3	12.3				7.4	8.7
	165.1				22.2	26.2				12.2	14.2				8.8	10.0
1000	114.3	1150	1158	1198	15.4	19.8	600	608	626	8.8	11.0	380	388	406	6.1	7.5
	139.7				18.9	23.3				11.5	13.7				7.9	9.3
	165.1				24.1	28.5				13.5	15.8				9.3	10.7

\*1. Belt Width not covered under IS.

2. Rollers with 76.2 mm, 101.6 mm, 127 mm & 152.4 mm. dia can be made as per Customers Specific requirement.

3. Impact idlers will have Rubber Rings (Shore Hardness 65 $\pm$ 5°) press fitted on the 88.9/114.3 dia tube and locked at both ends.

4. Weight of Roller based on medium duty tube.

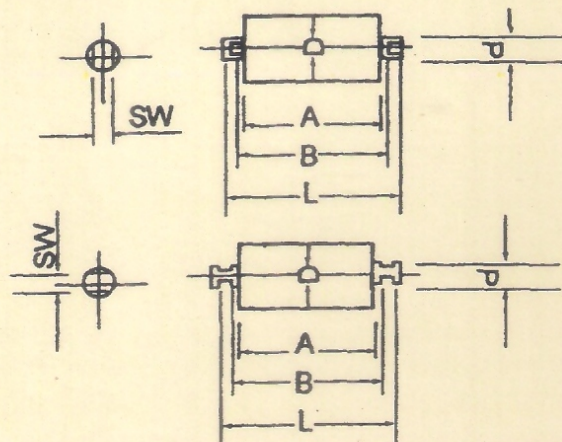








# BELT CONVEYOR



SERIES - **ME** 206  
STANDARD - IS : 8598 / 4776  
TUBE DIA & THICKNESS AS PER IS : 9295

	L	M	H	E. H.
1) 114.3 dia	- 3.65	4.5	5.4	6.3
2) 139.7 dia	- 4.5	4.85	5.4	6.3
4) 165.1 dia	- 4.5	4.85	5.4	6.3
	d	=	30 mm	
	SW	=	22 mm	

All Dimension are in mm.

SERIES : **ME** : 6206/420206

Belt Width	Roller Dia.	Flat Top / Return Idler					2 Roll Top Idler					3 Roll Top Idler				
		Dimension in mm.			Wt. in kg.		Dimension in mm.			Wt. in kg.		Dimension in mm.			Wt. in kg.	
		A	B	L	Rotating Parts	Total	A	B	L	Rotating Parts	Total	A	B	L	Rotating Parts	Total
800	114.3	950	958	992	13.3	20.8	465	473	497	7.4	11.0	315	323	347	5.6	8.0
	139.7				17.4	25.0				9.6	13.2				7.1	9.6
	165.1				20.6	28.0				11.2	14.9				8.4	10.8
* 900	114.3	1050	1058	1092	14.5	22.8	530	538	562	8.2	12.4	350	358	382	6.0	8.8
	139.7				19.0	27.4				10.6	14.8				7.7	10.4
	165.1				22.4	30.8				12.5	16.7				9.0	11.8
1000	114.3	1150	1158	1192	15.7	24.9	600	608	632	9.0	13.8	380	388	412	6.4	9.4
	139.7				20.7	29.9				11.8	16.5				8.2	11.2
	165.1				24.4	33.6				13.8	18.6				9.6	12.6
1200	114.3	1400	1408	1442	18.7	29.9	700	708	732	10.3	15.8	465	473	497	7.4	11.0
	139.7				24.7	35.9				13.4	18.9				9.6	13.2
	165.1				29.2	40.4				15.8	21.3				11.2	14.9
1400	114.3	1600	1608	1642	21.1	33.9	800	808	832	11.5	17.8	530	538	562	8.2	12.4
	139.7				28.0	40.7				15.0	21.3				10.6	14.8
	165.1				33.0	45.8				17.7	24.0				12.5	16.7
1500	114.3	1700	1708	1742	22.4	35.9	850	858	882	12.0	18.8	565	573	597	8.6	13.0
	139.7				29.6	43.1				15.8	22.5				14.2	15.6
	165.1				35.0	48.5				18.6	25.4				13.2	17.6
* 1600	114.3	1800	1808	1842	23.6	37.9	900	908	932	12.7	19.8	600	608	632	9.0	13.8
	139.7				31.2	45.6				16.6	23.7				11.8	16.5
	165.1				36.9	51.2				19.6	26.7				13.8	18.6
1800	114.3	2000	2008	2042	26.0	42.0	1000	1008	1032	13.9	21.8	670	678	702	9.9	15.2
	139.7				34.4	50.4				18.2	26.1				12.9	18.2
	165.1				40.7	56.7				21.5	29.4				15.2	20.5
2000	114.3	2200	2208	2242	28.4	46.0	1100	1108	1132	15.1	23.6	750	758	782	10.9	16.8
	139.7				37.7	55.2				19.9	28.3				14.2	20.1
	165.1				41.3	58.8				23.4	31.9				16.7	22.6

\*1. Belt Width not covered under IS.

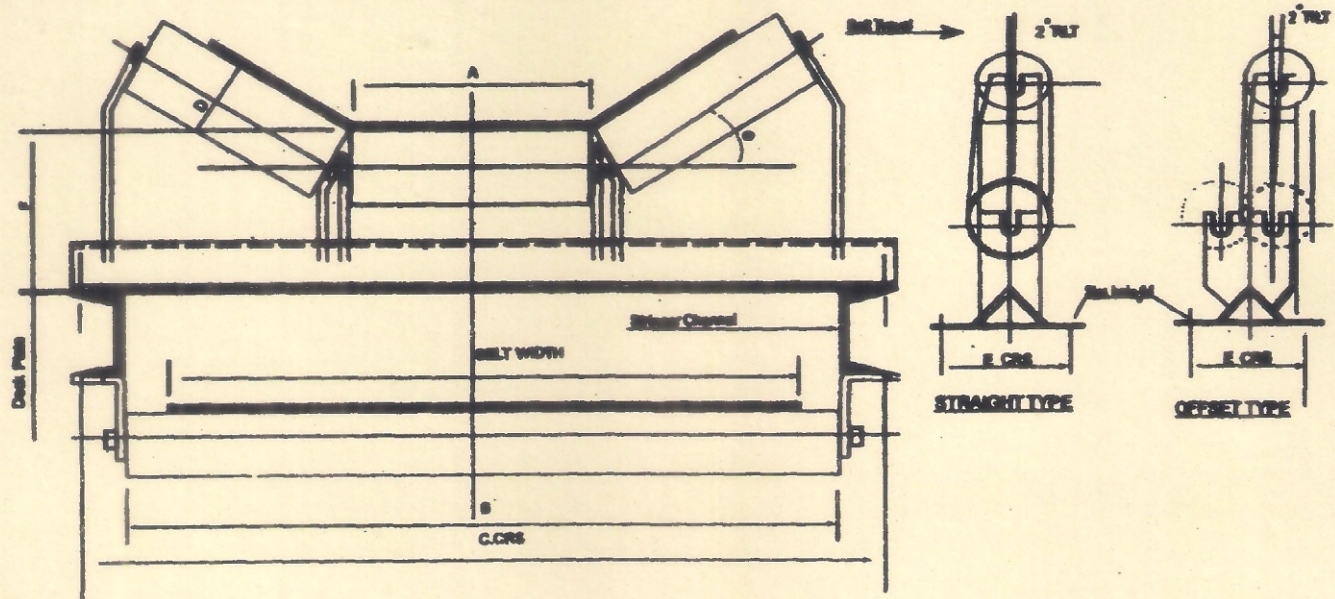
2. Rollers with 76.2 mm, 101.6 mm, 127 mm & 152.4 mm. dia can be made as per Customers Specific requirement.

3. Impact Idlers will have Rubber Rings (Shore Hardness 65 $\pm$ 5 $^{\circ}$ ) press fitted on the 88.9/114.3 dia tube and locked at both ends.

4. Weight of Roller based on medium duty tube.



# STATE OF ART IDLERS FOR EVERYTHING



## 20°, 30°, 35° Troughing Idler Set (Plain & impact Type with Stringer & Return Idler)

Dimension in mm.					F				M (Slot Size)
Belt Width	A	B	C	E	Upto 88.9 D	Upto 114.3 D	Upto 139.7 D	Upto 165.1 D & above	
* 400	160	500	640	165/200	200	225	—	—	14 × 25
450	180	550	690	165/200	200	225	—	—	14 × 25
500	200	600	740	165/200	200	225	—	—	14 × 25
* 600	235	700	840	165/200	200	225	—	—	14 × 25
650	250	750	890	200	200	225	—	—	18 × 30
* 750	290	850	990	200	—	225	275	—	18 × 30
800	315	950	1040	200	—	225	275	290	18 × 30
* 900	350	1050	1140	200	—	225	275	290	18 × 30
1000	380	1150	1240	200	—	225	275	290	18 × 30
1200	465	1400	1450	200	—	240	275	290	18 × 30
1400	530	1600	1650	200	—	240	275	290	18 × 30
* 1500	565	1700	1775	200	—	240	275	290	22 × 40
1600	600	1800	1900	200	—	240	275	290	22 × 40
1800	670	2000	2100	200	—	240	275	290	22 × 40
2000	750	2200	2300	200	—	240	275	290	22 × 40

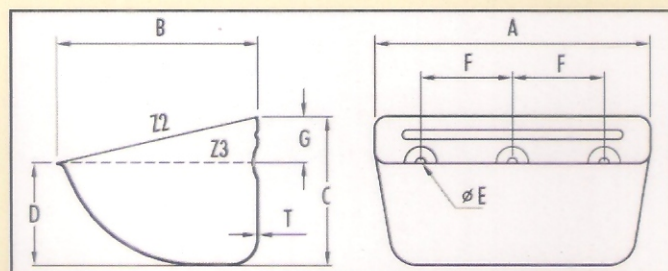
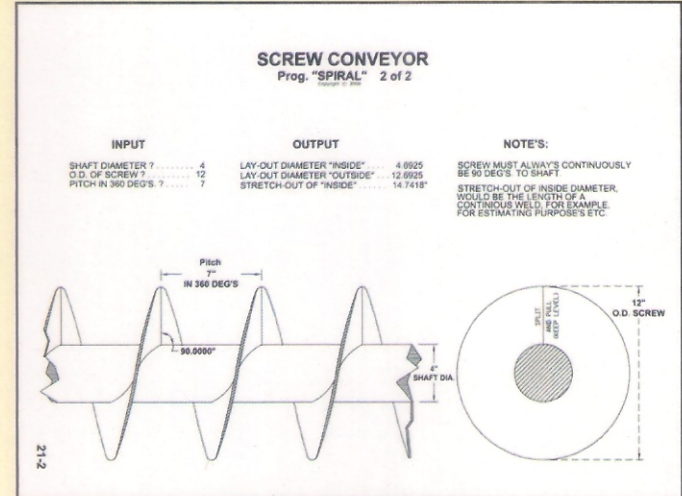
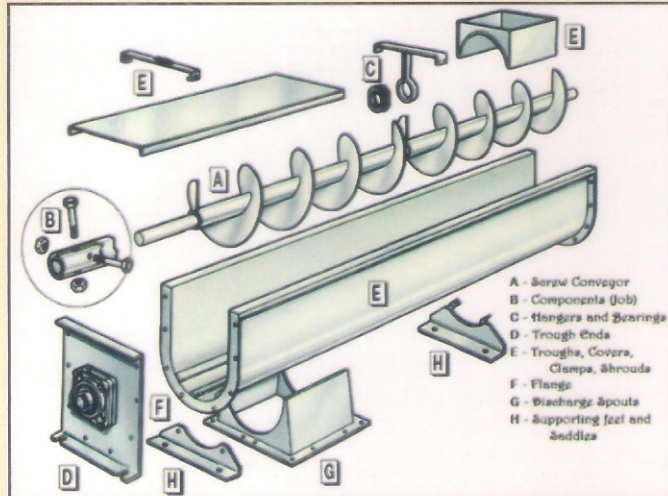
\* Belt Width not covered under IS.  
All dimensions are in mm.



# SCREW CONVEYOR



# BUCKET ELEVATOR

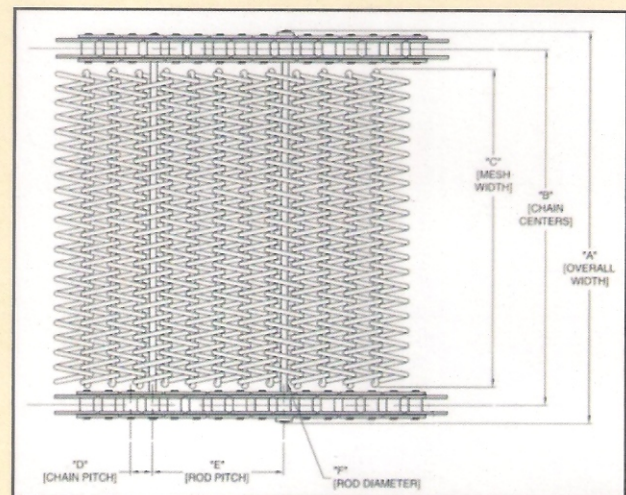
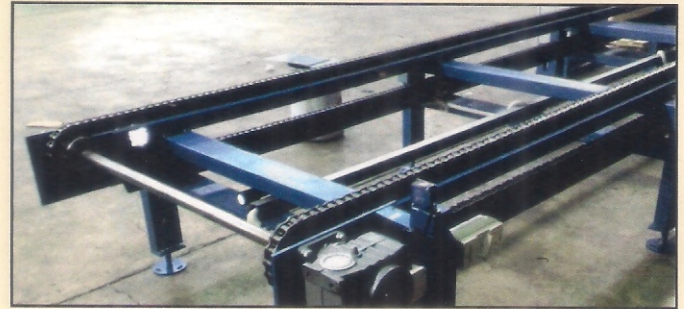
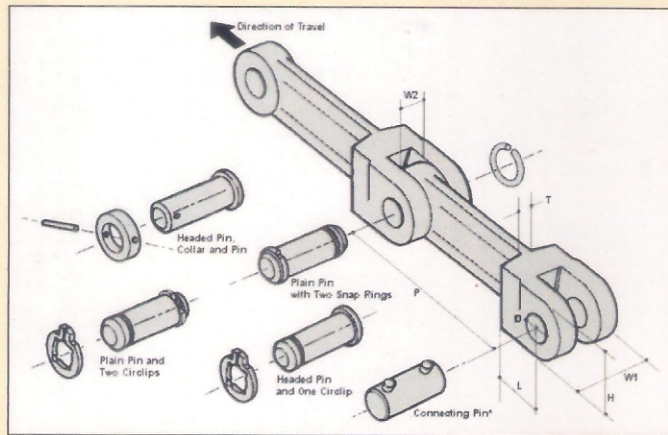




# CHAIN CONVEYOR

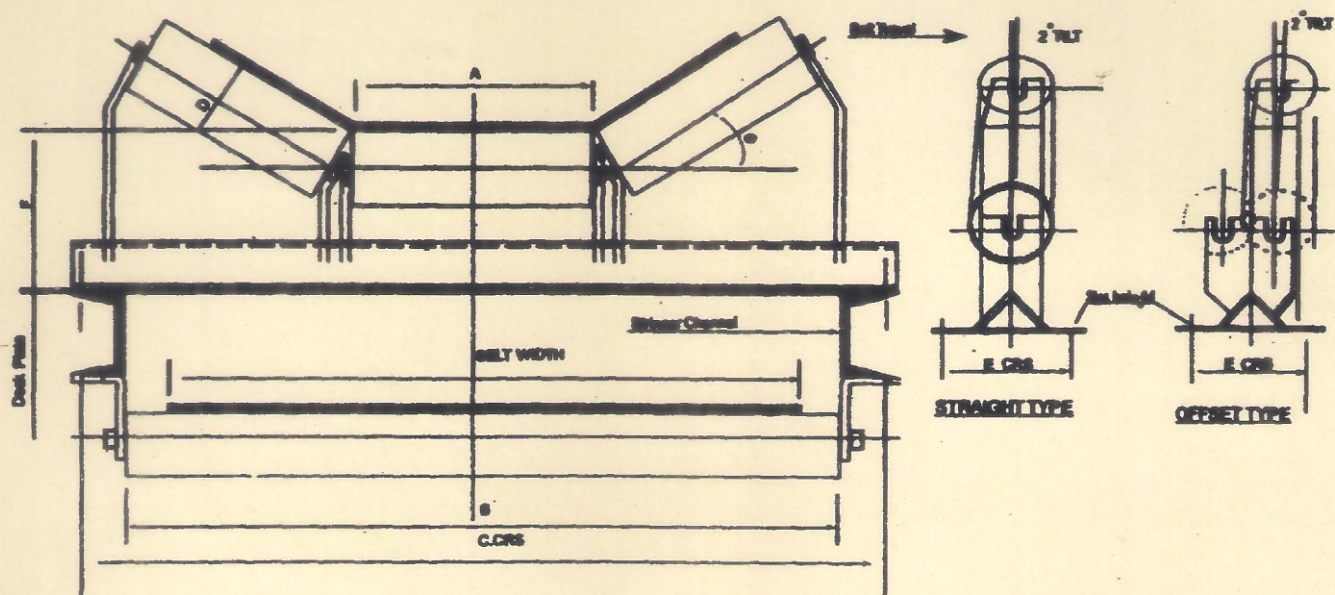


# SCREEN VIBRATING WIRE MASH





# STATE OF ART IDLERS FOR EVERYTHING



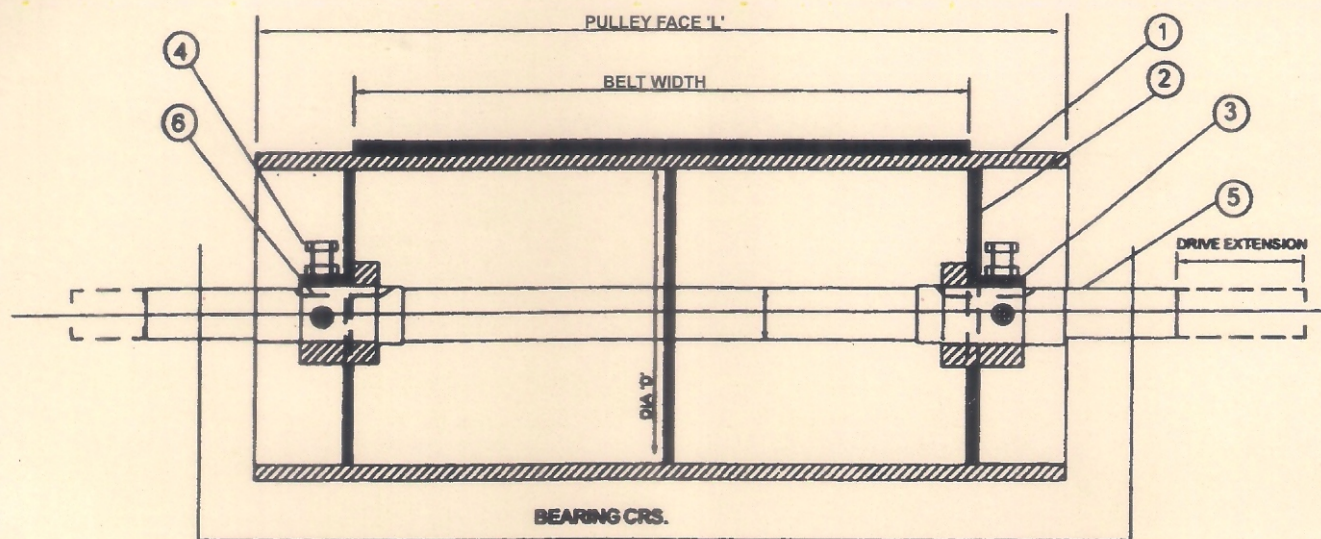
## 20°, 30°, 35° Troughing Idler Set (Plain & impact Type with Stringer & Return Idler

Dimension in mm.					F				M (Slot Size)
Belt Width	A	B	C	E	Upto 88.9 D	Upto 114.3 D	Upto 139.7 D	Upto 165.1 D & above	
* 400	160	500	640	165/200	200	225	—	—	14 × 25
450	180	550	690	165/200	200	225	—	—	14 × 25
500	200	600	740	165/200	200	225	—	—	14 × 25
* 600	235	700	840	165/200	200	225	—	—	14 × 25
650	250	750	890	200	200	225	—	—	18 × 30
* 750	290	850	990	200	—	225	275	—	18 × 30
800	315	950	1040	200	—	225	275	290	18 × 30
* 900	350	1050	1140	200	—	225	275	290	18 × 30
1000	380	1150	1240	200	—	225	275	290	18 × 30
1200	465	1400	1450	200	—	240	275	290	18 × 30
1400	530	1600	1650	200	—	240	275	290	18 × 30
* 1500	565	1700	1775	200	—	240	275	290	22 × 40
1600	600	1800	1900	200	—	240	275	290	22 × 40
1800	670	2000	2100	200	—	240	275	290	22 × 40
2000	750	2200	2300	200	—	240	275	290	22 × 40

\* Belt Width not covered under IS.  
All dimensions are in mm.



## STATE OF ART IDLERS FOR EVERYTHING



1. SHELL
2. END PLATE
3. HUB/BOSS
4. SET BOLT WITH NUT
5. SHAFT
6. KEY

**ME** Standard conveyor Pulleys are fabricated from Steel shells/plates with welded end plates and bosses keyed/fitted direct/through Taper sleeve on the shaft.

Shell thickness before machining - from 8 to 20 mm. The distance over bosses can be made to suit any requirement, however, we recommend that this be as wide as possible to keep the dimension between the boss and bearings to minimum to reduce shaft flexing.

The Diameters of pulleys selected for a given application depend on the Specification of Belt, which in turn depend on the power to be transmitted. We suggest to use adequate diameter of Drum based on above factors and as recommended by Belt manufacturers.

Drive/Tail/Take-up pulleys have machined crowned faces to train and reduce wear on Belt. Other pulleys are with straight face.

Plain or grooved rubber lagging can be furnished when additional friction is required between belt and pulley or if the application calls for the same such as handling wet/abrasive materials etc.

all pulleys are concentric and statically balanced and confirm to IS : 8531

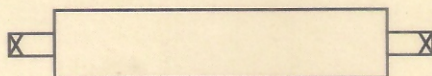
Belt Width B.W. mm	Standard Dia 'D' mm	Face mm 'L' mm	Shaft Dia 'D' mm
400	- 217, 271, 321, 353, 400, 450, 500, 630, 800, 1000, 1250, 1400 and 1600 mm	500	- Availabel from 45 mm to 200 mm
* 450		550	
500		600	
* 600		700	
650		750	
* 750		850	
800		950	
* 900		1050	
1000		1150	
1200		1400	
1400		1600	
* 1500		1700	
1600		1800	
1800		2000	
2000		2200	

\* Belt Width not covered under I S. S.



## OUR PRODUCE RANGE FOR CONVEYOR ROLLERS

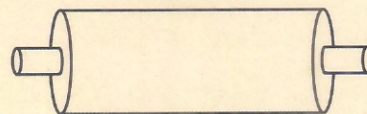
1) Idlers



2) Idlers Frames

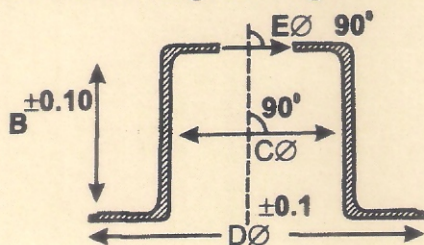


3) Drum Pully



4) Sheet Metal Jobs. Like

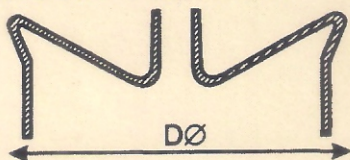
a) Pressed Steel Bearing Housing



	-0.03 -0.00 C Ø	-0.03 -0.00 C Ø	±0.2 E Ø
Bearing			
6204/ 420204	47	43	27
6205/ 420205	52	44	32
6206/ 420206	62	45.5	37
6306	72	48.5	37
6307	80	58	42
6308	40	55.5	47

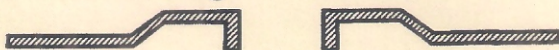
Tube Ø	D Ø -0.10
63.5	58.5
76.1	71
88.9	84.5
101.6	97.5
108	103.5
114.3	109.5
127	122.5
139.7	135
152.4	147
159	151
168.3	163

b) Pressed Steel Dust Covers



Bearing	D Ø +0.3
6204	47 Ø
6205	52 Ø
6206	62
6306	72
6307	80
6308	90

c) Grease Seal Rings

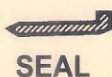


5) Zinc & Aluminum Die Castings. &

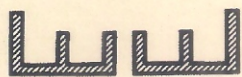
6) Nylon Injection Products. Link



BACK



SEAL



EXTERNAL LABY



INTERNAL LABY



RAIN CAP



# MANA ENTERPRISE

Manufacturer of : Material Handling Device, Mechanical Engineers & Fabricators

Unit - I : Biplabi Anadi Das Sarani, Dasnagar, Howrah - 711 105

Unit - II : Saraswati Complex, Ankurhati, Domjur, Howrah

Tel. No. : 033-6555-2056 ● Mob. No. : +91 9831532055

Tel. Fax : (033) 2653-2463

E-mail : manaenterprise@yahoo.com / enterprise\_mana@yahoo.com

Website : www.conveyormana.com